

# 566HO1246 MR MONTROSS

## CAN DO \*MW -ET

Holstein 74414103 99% RHA-I \*MW \*TC \*TY \*TV \*TL \*TD  
 Born: November 18, 2014 aAa: 324156 DMS: 345  
 A2A2 Kappa-Casein: BB

### CDCB PTAs 4/24

**GTPI +2324** +1451M -0.10% +26F +0.00% +44P 98% Rel.  
 Type +0.75 89% Rel. UDC +0.95 FLC -0.11  
 NM \$362 CM \$364 GM \$283 FE 110 FSAV -73 EFI 9.6%  
 633 Dtrs./202 Herds DPR -2.1 PL +2.1 LIV -1.3 HLIV +0.7 SCS 2.91  
 Wellness Traits MAST 96 LAME 103 MET 98 RP 99  
 KET 99 DA 94 DWP\$® \$199 WT -\$53  
 Calf Traits LIV 82 SCOURS 100 RES 94 CW -\$79  
 Milking Speed 101 Milking Temperament 106  
 Calving Ease / OBS / Daughter CE: 1.7% 1083 1.9%  
 Actual Daughter Avg. Score (4/24): 79.3 AASC: 81.9  
 Actual Daughter Avg. Production (4/24): 29,615 3.7% 1103F 3.1% 915P

- Sire:** Bacon-Hill Montross-ET  
**Dam:** Larcrest Canto-ET "VG-88" GMD, DOM  
 3-00 2x 365d 39.660 4.0 1568 3.1 1243  
**MGS:** Seagull-Bay Supersire-ET  
**MGD:** Larcrest Cale-ET "VG-89" DOM  
 2-02 2x 365d 41,710 5.3 2204 3.6 1487  
**3rd Dam:** Larcrest Crimson-ET "EX-94" 3E, GMD, DOM  
 5-02 2x 365d 46,390 5.3 2448 3.5 1620  
**4th Dam:** Larcrest Cosmopolitan "VG-87" GMD, DOM  
 2-04 2x 365d 30,930 4.1 1261 3.4 1061  
**5th Dam:** Larcrest Oside Champagne-TW "EX-90" GMD, DOM  
 2-03 2x 365d 29,110 4.5 1322 3.5 1022  
**6th Dam:** Larcrest Juror Chanel "EX-93" 3E, GMD, DOM  
 9-00 2x 365d 48,460 4.0 1943 3.2 1556  
**7th Dam:** Larcrest Lindy Chandra "VG-85"

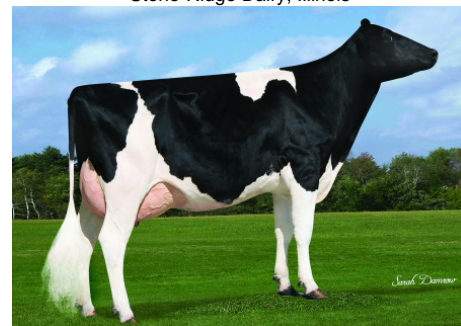
	USDA	-2	-1	0	1	2
Stature	0.21T					
Strength	0.73S					
Body Depth	0.68D					
Dairy Form	1.390					
Rump Angle	0.89S					
Rump Width	0.96W					
R Legs - Side View	-1.22S					
R Legs - Rear View	-0.14H					
Foot Angle	0.18S					
Feet & Legs Score	0.00L					
Fore Attachment	0.52S					
Rear Udder Height	1.87H					
Rear Udder Width	2.48W					
Udder Cleft	0.41S					
Udder Depth	-0.49D					
F Teat Placement	-0.19W					
R Teat Placement	0.14C					
Teat Length	0.98L					



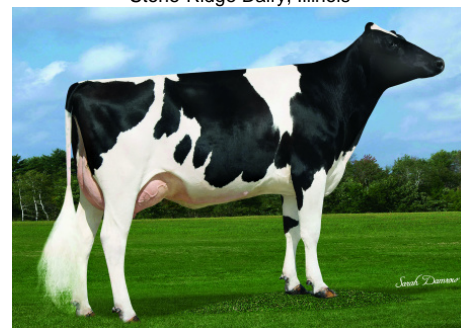
566HO1246 CAN DO



566HO1246 CAN DO Daughter:  
 SRD-KD Can Do 4539  
 Stone-Ridge Dairy, Illinois



566HO1246 CAN DO Daughter:  
 SRD-KD Can Do 4840  
 Stone-Ridge Dairy, Illinois



566HO1246 CAN DO Daughter:  
 SRD-KD Can Do 4683  
 Stone-Ridge Dairy, Illinois



International Protein Sires

WWW.IPSSIRES.COM Facebook: International Protein Sires  
 608-524-8086 E-mail: contact@ipssires.com